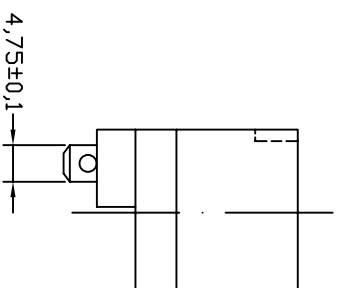


- A: MATERIAL:
 1. HOUSING: PBT WITH 30% GLASS FIBER UL 94V-0
 2. TERMINAL: COPPER ALLOY
- B: CHARACTERISTICS:
 1. RATING: 10A250V AC
 2. INSULATION RESISTANCE: OVER 100MΩ 500V DC
 DIELECTRIC STRENGTH: 2000V 0.5mA AC 1 MINUTE
- C: APPROVALS:
 CCC (No.2003010204032553)



ITEM	PART NO.	PART NAME	QTY	SPECIFICATION	MATERIAL	REMARKS
2	T-11WB	TERMINAL	2PCS	Ø4.75±0.5	COPPER ALLOY	TIN-PLATED
1		HOUSING	9.83g	SNAP-IN TYPE	PBT+30%GF	THERMOPLASTIC

SHEN ZHEN STEADY ELECTRONICS CORPORATION
 深圳市仁达电子有限公司

TOLERANCE UNLESS OTHERWISE MARKED
 DIMENSION: ANGULAR ±0.5
 0~6 : ±0.1
 6~30 : ±0.2
 30~120 : ±0.3

REV	DATE	DESCRIPTION	WRITE	APPD.
A.0	2008.04.30	RE DRAWING	谢莉萍	

UNIT:	SCALE	SHEET
mm	1:1	1 OF 1

APPROVED	CHECKED	DRAW BY	JOB NO.:
		谢莉萍	
		08/04/30	

PART NO.: 2111-PWT-2P-G
 NAME: AC INLET 3P
 MATERIAL: SEE ABOVE
 SPEC.: _____