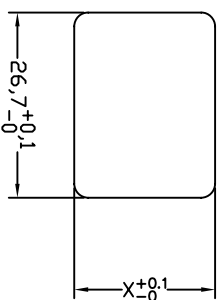
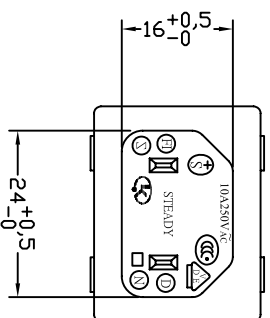
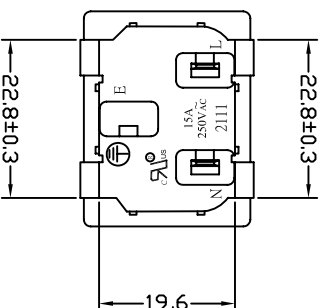
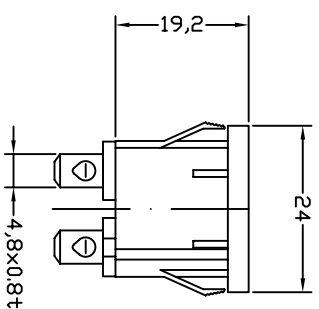
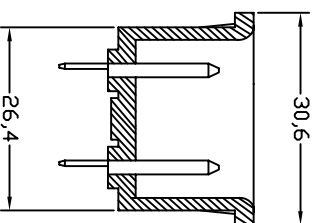


THICKNESS:  
 0.8~1.2t (X=20.3)  
 1.3~2.0t (X=20.5)



PANEL CUT



- A: MATERIAL:  
 1. HOUSING: NYLON 66 FLAMMABILITY UL 94V-2  
 (UL94 V0 ON REQUEST)  
 2. TERMINAL: COPPER ALLOY

- B: CHARACTERISTICS:  
 1. RATING: 10A250V AC EUROPE  
 15A250V AC NORTH AMERICA  
 2. INSULATION RESISTANCE: OVER 100M Ω 500VAC  
 DIELECTRIC STRENGTH: 2000V AC 1 MINUTE

- C: APPROVALS:  
 UL, CSA, VDE, DEMKO, SEMKO, SEV, FIMKO & NEMKO CCC, KTL  
 D: ORDERING OPTIONS:

ORDER#	ITEM REQ.	TERMINAL DIFFERENCES
2111-PQ-2P-G	① + ②	4.8 SOLDER Q.D.TABS

ITEM	PART NO.	PART NAME	QTY	SPECIFICATION	MATERIAL	REMARKS
2	T-47QB	TERMINAL	1 PCS	Ø4.8x5x0.8t	COPPER ALLOY	TIN-PLATED
1		HOUSING	5.2g	SNAP-IN TYPE	PA66	THERMOPLASTIC

 <b>深圳市仁达电子有限公司</b> SHEN ZHEN STEADY ELECTRONICS CORPORATION		PART NO.: 2111-PQ-2P-G NAME: SNAP-IN TYPE AC INLET 2P
TOLERANCE UNLESS OTHERWISE MARKED DIMENSION: 0 ~ 6 : ±0.1 6 ~ 30 : ±0.2 30 ~ 120 : ±0.3		MATERIAL: SEE ABOVE SPEC.:

REV	DATE	DESCRIPTION	WRITE	APPD.
A.0	2008.05.15	REF. DRAWING	谢锡强	

APPROVED 	CHECKED	DRAW BY 徐锡强	JOB NO.:
SHEET 1 OF 1	SCALE 1:1	UNIT: mm	A 