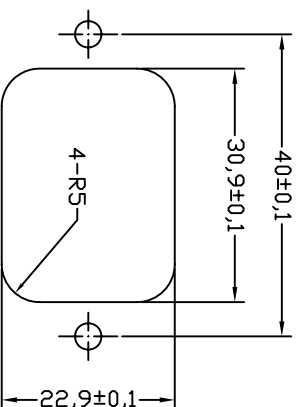
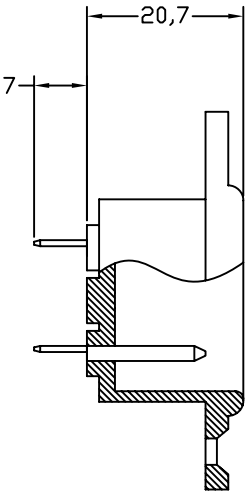


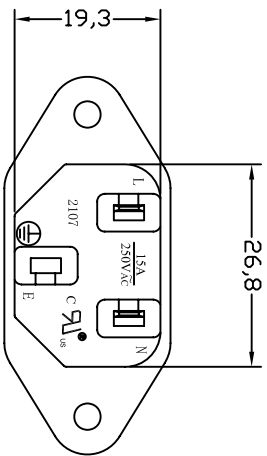
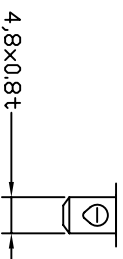
FOR FRONT MOUNTING USE



FOR REAR MOUNTING USE



PANEL CUT-OUT



A: MATERIAL:

1. HOUSING: PBT WITH 30% GF UL 94V-0
2. TERMINAL: COPPER ALLOY

B: CHARACTERISTICS:

1. RATING: 10A/250V AC EUROPE  
15A/250V AC NORTH AMERICA
2. INSULATION RESISTANCE: OVER 100MΩ 500V DC  
DIELECTRIC STRENGTH: 2000V AC 0.5mA, 1 MINUTE

C: APPROVALS:

UL, CSA, VDE, DEMKO, SEMKO, SEV, FIMKO & NEMKO, CCC, KTL  
D: ORDERING OPTIONS:

ORDER#	ITEM REQ.	TERMINAL DIFFERENCES
2107-CQ-2P	① + ②	4.8 SOLDER Q.D.TABS

ITEM	PART NO.	PART NAME	QTY	SPECIFICATION	MATERIAL	REMARKS
2	T-07QB	TERMINAL	2PCS	Ø4.8xw0.8t	COPPER ALLOY	TIN-PLATED
1		HOUSING	7.0g	SNAP-IN TYPE	PBT-30%GF	THERMOPLASTIC

**深圳市仁达电子有限公司**  
SHEN ZHEN STEADY ELECTRONICS CORPORATION

TERMINAL: 2107-CQ-2P-G  
NAME: SCREW-MOUNT AC INLET 2P

TOLERANCE UNLESS OTHERWISE MARKED

DIMENSION: ANGULAR ±0.5

0~6 : ±0.1

6~30 : ±0.2

30~120: ±0.3

MATERIAL: SEE ABOVE

SPEC.:

APPROVED: CHECKED: DRAW BY: 谢莉萍  
JOB NO.:

REV	DATE	DESCRIPTION	WRITE	APPRO.
A.0	2008.05.28	RE DRAWING	谢莉萍	



UNIT:	SCALE	SHEET
mm	1:1	1 OF 1