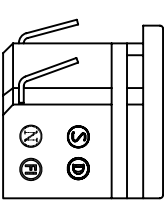
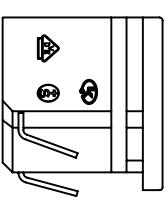
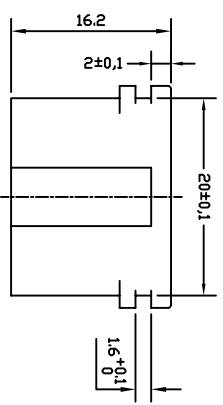


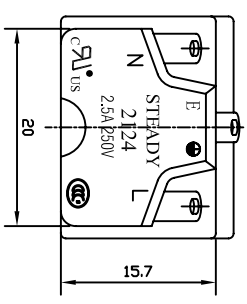
PANEL CUT-OUT



- A: MATERIAL:
1. HOUSING: PBT WITH 30% GLASS FIBER UL 94V-0
 2. TERMINAL: COPPER ALLOY

- B: CHARACTERISTICS:
1. RATING: 2.5A/250V AC
 2. INSULATION RESISTANCE: OVER 100MΩ 500V DC
 3. DIELECTRIC STRENGTH: 2000V AC ONE MINUTE

- C: APPROVALS:
- UL, CSA, VDE, SEMKO, SEV, NEMKO, DEMKO, FMKO, CCC, KTL
- PULL FORCE OF TERMINAL:
 PUSH ≤ 50N (6.12kgf)
 PULL: ≥ 20N (3.06kgf)



SHEN ZHEN STEADY ELECTRONICS CORPORATION
深圳市仁达电子有限公司

TOLERANCE UNLESS OTHERWISE MARKED
 DIMENSION: ANGULAR ±0.5

0~6 : ±0.1
 6~30 : ±0.2
 30~120 : ±0.3

ITEM	PART NO.	PART NAME	QTY	SPECIFICATION	MATERIAL	REMARKS
2	TA-24RB	TERMINAL	1PCS	SOLDERING	COPPER ALLOY	TIN-PLATED
1		HOUSING	3.4g	SNAP-IN TYPE	COPPER ALLOY	NE-PLATED

PART NO.: 2124-PSR3-G
 NAME: AC INLET 3P

MATERIAL: SEE ABOVE
 SPEC.: _____

APPROVED: _____ CHECKED: _____ DRAW BY: 侯锡强
 JOB NO.: _____

REV	DATE	DESCRIPTION	WRITE	APPD.

A	UNIT:	SCALE	SHEET
4	mm	1:1	1 OF 1