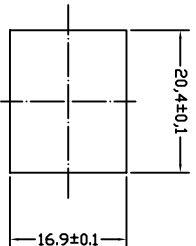
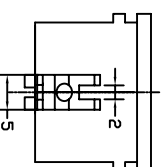
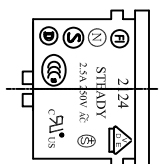
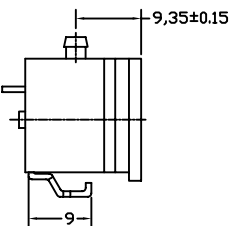
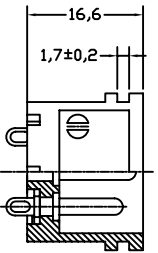


THICKNESS:1.2~1.6t



PANEL CUT-OUT



- A:MATERIAL:  
 1. HOUSING: PA66 UL 94V-2(UL 94V-0 ONREQUEST)  
 2. TERMINAL: COPPER ALLOY

- B:CHARACTERISTICS:  
 1. RATING:2.5A250V AC  
 2. INSULATION RESISTANCE: OVER 100M Ω 500V DC  
 3.DIELECTRIC STRENGTH: 2000V AC ONE MINUTE

C:APPROVALS:  
 UL, CSA, VDE, SEMKO, SEV, NEMKO, DEMKO, FIMKO, CCC

ITEM	PART NO.	PART NAME	QTY	SPECIFICATION	MATERIAL	REMARKS
5	T-24RB	TERMINAL	2PCS	P.C.B	COPPER ALLOY	TIN-PLATED
4	T-24SA	TERMINAL	1PCS	Ø5×0.8t	COPPER ALLOY	TIN-PLATED
3	T-24PB	TERMINAL	2PCS	Ø2.36	COPPER ALLOY	NI-PLATED
2	T-24PA	TERMINAL	1PCS	Ø3.15	COPPER ALLOY	NI-PLATED
1	H-24P-G	HOUSING	3.4g	SN-PAINTYPE	PA66	



深圳市仁达电子有限公司  
 SHEN ZHEN STEADY ELECTRONICS CORPORATION

PART NO.:  
 2124-PSA-G

NAME:  
 AC INLET 3P  
 WITH P.C.B

TOLERANCE UNLESS OTHERWISE MARKED

DIMENSION:  
 ANGULAR

0~6 : ±0.1

6~30 : ±0.2

30~120: ±0.3

MATERIAL:  
 SEE ABOVE

SPEC.:

APPROVED

CHECKED

DRAW BY

JOB NO.:

REV	DATE	DESCRIPTION	WRITE	APPRO.
A.0	2008.06.2	RE DRAWING	谢莉萍	

UNIT:	SCALE	SHEET
mm	1:1	1 OF 1

4	谢莉萍	08/06/2
---	-----	---------