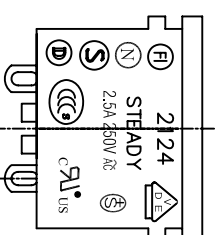
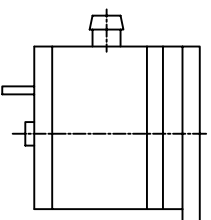
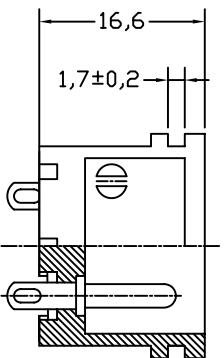


THICKNESS: 1.2~1.6t

PANEL CUT-OUT



A: MATERIAL:  
1. HOUSING: PA66 UL 94V-2 (UL 94V-0 ON REQUEST)

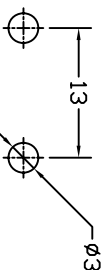
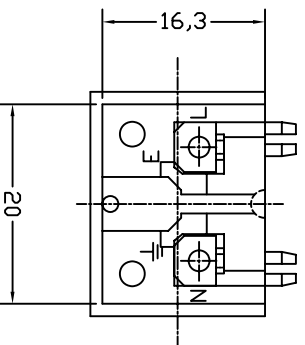
2. TERMINAL: COPPER ALLOY

B: CHARACTERISTICS:

1. RATING: 2.5A/250V AC
2. INSULATION RESISTANCE: OVER 100MΩ 500V DC
3. DIELECTRIC STRENGTH: 2000V AC ONE MINUTE

C: APPROVALS:

UL, CSA, VDE, SEMKO, SEV, NEMKO, DEMKO, FMKQ, CCC



PCB LAYOUT

ITEM	PART NO.	PART NAME	QTY	SPECIFICATION	MATERIAL	REMARKS
3	T-24RS	TERMINAL	2PCS		COPPER ALLOY	TIN-PLATED
2	T-24PB	TERMINAL	2PCS		COPPER ALLOY	NI-PLATED
1	H-24-P-G	HOUSING	3.46	SNAP-IN TYPE	PA66	THERMOPLASTIC

深圳市仁达电子有限公司  
SHEN ZHEN STEADY ELECTRONICS CORPORATION

TOLERANCE UNLESS OTHERWISE MARKED  
DIMENSION: ANGULAR ±0.5

0~6 : ±0.1  
6~30 : ±0.2  
30~120: ±0.3

REV	DATE	DESCRIPTION	APPR.
A.0	2008.06.2	RE DRAWING	

UNIT:	SCALE	SHEET
mm	1:1	1 OF 1

APPROVED	CHECKED	DRAW BY	JOB NO.:
		谢莉萍	2124-PRS
		08/05/26	