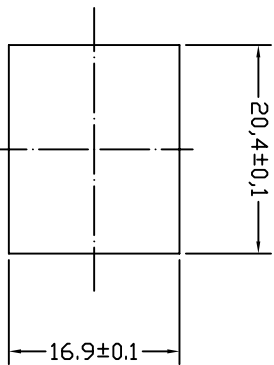
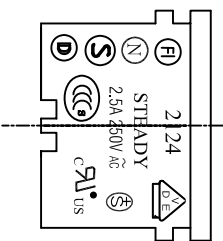
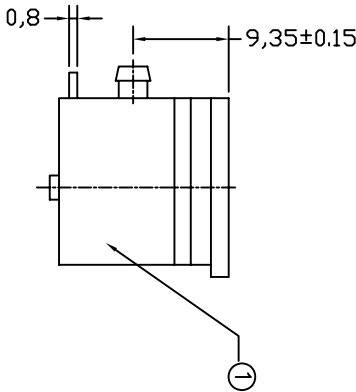


THICKNESS: 1.2~1.6t



PANEL CUT-OUT



- A: MATERIAL:
- HOUSING: PBT WITH +30% GLASS FIBER UL 94V-0
  - TERMINAL: COPPER ALLOY

B: CHARACTERISTICS:

- RATING: 2.5A250V AC
- INSULATION RESISTANCE: OVER 100MΩ 500V DC
- DIELECTRIC STRENGTH: 2000V AC ONE MINUTE

C: APPROVALS:

UL, CSA, VDE, SEMKO, SEV, NEMKO, DEMKO, FIMKO, CCC  
D: ORDERING OPTION

ORDER#	ITEM REQ.	DIM. X
2124-PP	① + ②	2.5

5	T-24RB	TERMINAL	2PCS	P.C.B	COPPER ALLOY	TIN-PLATED
4	T-24RA	TERMINAL	1PCS	P.C.B	COPPER ALLOY	TIN-PLATED
3	T-24PB	TERMINAL	2PCS		COPPER ALLOY	NI-PLATED
2	T-24PA	TERMINAL	1PCS		COPPER ALLOY	NI-PLATED
1	H-24-P-G	HOUSING	3.4g	SNAP-IN TYPE	PA66	THERMOPLASTIC
ITEM	PART NO.	PART NAME	QTY	SPECIFICATION	MATERIAL	REMARKS

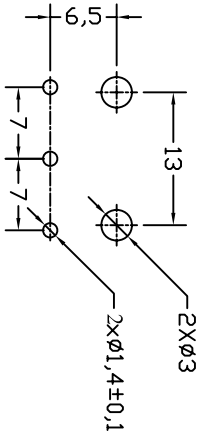
深圳市仁达电子有限公司  
SHEN ZHEN STEADY ELECTRONICS CORPORATION

PART NO.: 2124-PP-G  
NAME: SNAP-IN AC INLET WITH P.C.B

TOLERANCE UNLESS OTHERWISE MARKED  
DIMENSION: 0~6 : ±0.1  
6~30 : ±0.2  
30~120: ±0.3

MATERIAL: SEE ABOVE  
SPEC: \_\_\_\_\_

PCB LAYOUT



REV	DATE	DESCRIPTION	WRITE	APPD.
A.0	2008.05.30	RF DRAWING	谢莉萍	

UNIT: mm	SCALE 1:1	SHEET 1 OF 1	APPROVED	CHECKED	DRAW BY 谢莉萍	JOB NO.: 2124-P
4					08/05/30	