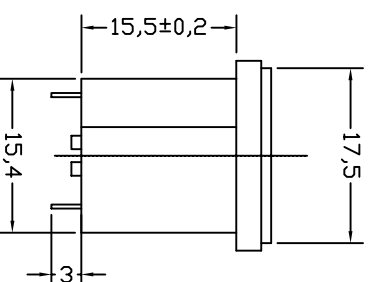
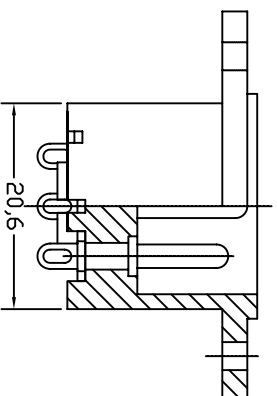


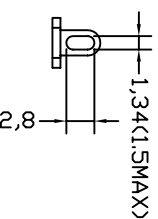
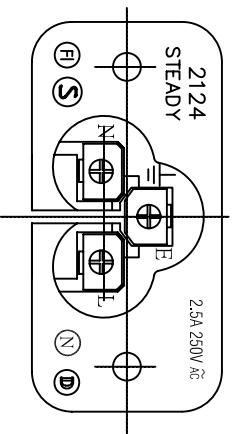
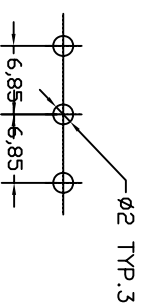
PANEL CUT-OUT

- A: MATERIAL:
 1. HOUSING: PBT WITH +30%GLASS FIBER UL 94V-0
 2. TERMINAL: COPPER ALLOY
- B: CHARACTERISTICS:
 1. RATING: 2.5A250V AC
 2. INSULATION RESISTANCE: OVER 100M Ω 500V DC
 3. DIELECTRIC STRENGTH: 2000V AC ONE MINUTE
- C: APPROVALS:
 UL, CSA, VDE, SEMKO, SEV, NEMKO, DEMKO, FIMKO, CCC
 D: ORDERING OPTION

ORDER#	ITEM REQ.	TERMINAL
2124-FRS-G	① + ③	SOLDER TABS



PCB LAYOUT



ITEM	PART NO.	PART NAME	QTY	SPECIFICATION	MATERIAL	REMARKS
4	T-24RS	TERMINAL	3PCS	SOLDER	COPPER ALLOY	TIN-PLATED
3	T-24PBL	TERMINAL	2PCS	$\phi 2.36$	COPPER ALLOY	NI-PLATED
2	T-24PAL	TERMINAL	1PCS	$\phi 3.15$	COPPER ALLOY	NI-PLATED
1	H-24-F-G	HOUSING	3, 828	SNAP-IN TYPE	PBT+30%GF	THERMOPLASTIC

深州市仁达电子有限公司
 SHEN ZHEN STEADY ELECTRONICS CORPORATION

TOLERANCE UNLESS OTHERWISE MARKED
 DIMENSION: ANGULAR
 0 ~ 6 : ± 0.1
 6 ~ 30 : ± 0.2
 30 ~ 120 : ± 0.3

PART NO.: 2124-FRS-G
 MATERIAL: SEE ABOVE
 NAME: SCREW TYPE
 SPEC.: AC INLET 3P

REV	DATE	DESCRIPTION	WRITE	APP.
A.0	2008.05.15	RE. DRAWING	谢莉萍	

APPROVED	CHECKED	DRAW BY	JOB NO.:
		谢莉萍	
		08/05/15	