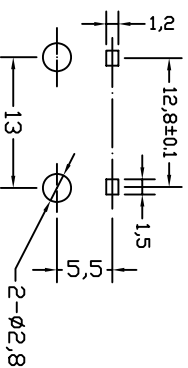
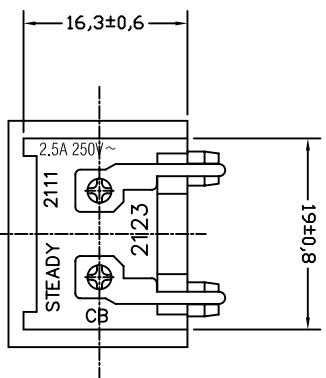
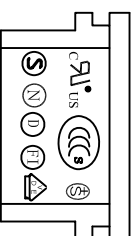
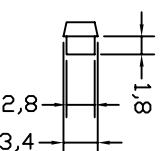
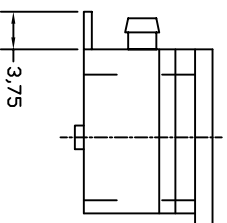
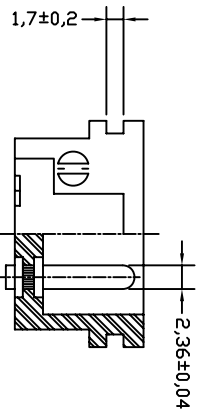


PANEL CUT-OUT

- A: MATERIAL:  
 1. HOUSING: NYLON 66 FIBER UL 94V-0  
 2. TERMINAL: COPPER ALLOY

- B: CHARACTERISTICS:  
 1. RATING: 2.5A/250V AC  
 2. INSULATION RESISTANCE, DIELECTRIC STRENGTH PER APPROVAL SHEET

C: APPROVALS:  
 UL, CSA, VDE, SEMKO, SEV, NEMKO, DEMKO, FIMKO, CCC



PCB LAYOUT

ITEM	PART NO.	PART NAME	QTY	SPECIFICATION	MATERIAL	REMARKS
3	T-20-IR1	TERMINAL	2PCS	PCB TYPE	COPPER ALLOY	TIN-PLATED
2	T-20-IP	TERMINAL	2PCS	∅ 2.36	COPPER ALLOY	NI-PLATED
1	H-23-P-P1-G	HOUSING	4.31g	SNAP-IN TYPE	P66	THERMOPLASTIC

**SHEN ZHEN STEADY ELECTRONICS CORPORATION**  
 深圳市仁达电子有限公司

TOLERANCE UNLESS OTHERWISE MARKED  
 DIMENSION:  
 0 ~ 6 : ±0.1  
 6 ~ 30 : ±0.2  
 30 ~ 120 : ±0.3

PART NO.: 2123-PP-P1-G  
 MATERIAL: SEE ABOVE  
 ANGLULAR ±0.5

NAME: SNAP-IN TYPE AC INLET 2P  
 SPEC.:

REV	DATE	RE. DRAWING	DESCRIPTION	WRITE	APPD.
A.0	2008.05.15			谢莉萍	

UNIT	SCALE	SHEET	APPROVED	CHECKED	DRAW BY	JOB NO.:
mm	1:1	1 OF 1			谢莉萍	
					08/05/15	