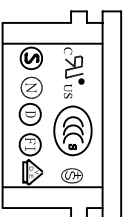
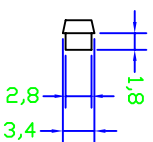
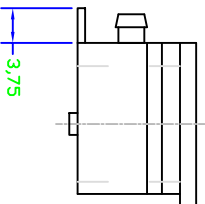
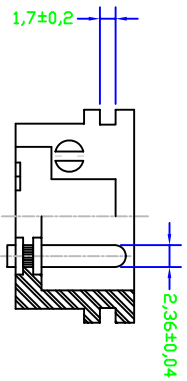


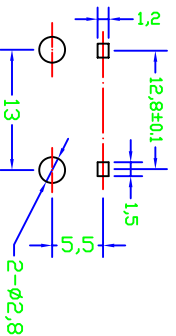
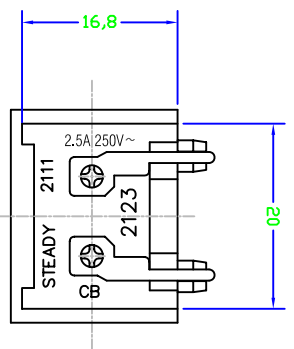
PANEL CUT-OUT



- A: MATERIAL:
 1. HOUSING: PBT WITH +30% GLASS FIBER UL 94V-0
 2. TERMINAL: COPPER ALLOY

- B: CHARACTERISTICS:
 1. RATING: 2.5A/250V AC
 2. INSULATION RESISTANCE, DIELECTRIC STRENGTH PER APPROVAL SHEET

C: APPROVALS:
 UL, CSA, VDE, SEMKO, SEV, NEMKO, DEMKO, FIMKO, CCC



PCB LAYOUT

ITEM	PART NO.	PART NAME	QTY	SPECIFICATION	MATERIAL	REMARKS
3	T-20-1R1	TERMINAL	2PCS		COPPER ALLOY	TIN-PLATED
2	T-20-1P	TERMINAL	2PCS		COPPER ALLOY	NI-PLATED
1	H-23-P-WH-G	HOUSING	4-36		PBT+30 %GF	THERMOPLASTIC

		深圳市仁达电子有限公司 SHEN ZHEN STEADY ELECTRONICS CORPORATION	
PART NO.: 2123-PPT1-WH-G		NAME: SNAP-IN TYPE AC INLET 2P	

TOLERANCE UNLESS OTHERWISE MARKED DIMENSION: ANGULAR ±0.5 0-6: ±0.1 6-30: ±0.2 30-120: ±0.3		MATERIAL: SEE ABOVE		SPEC.: WHITE	
--	--	-------------------------------	--	------------------------	--

APPROVED		CHECKED		DRAW BY		JOB NO.:	
4				谢莉萍 08/07/14		2123-3C	

A.0	2008.07.14	RE DRAWING	谢莉萍		
REV	DATE	DESCRIPTION	WRITE	APPL.	