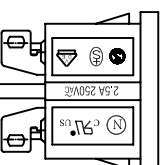
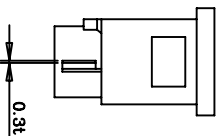


PANEL
CUT-OUT



- A: MATERIAL:
 1. HOUSING: PBT WITH +30% GLASS FIBER UL 94V-0
 2. TERMINAL: COPPER ALLOY

- B: CHARACTERISTICS:
 1. RATING: 2.5A 250V AC
 2. INSULATION RESISTANCE: OVER 100MΩ AT 500V DC
 3. DIELECTRIC STRENGTH: 2000V AC ONE MINUTE

C: APPROVALS:
 UL, CSA, VDE, SEMKO, SEV, NEMKO, CCC

ITEM	PART NO.	PART NAME	QTY	SPECIFICATION	MATERIAL	REMARKS
2	T-21S	TERMINAL	2 PCS	Ø 2.36	COPPER ALLOY	TIN-PLATED
1	H-21-3-9P-G	HOUSING	4.0g	SNAP-IN TYPE	PBT+30%GF(9#乳白)	THERMOPLASTIC

深圳市仁达电子有限公司
 SHEN ZHEN STEADY ELECTRONICS CORPORATION

TOLERANCE UNLESS OTHERWISE MARKED

DIMENSION:
 0~6 : ±0.1
 6~30 : ±0.2
 30~120: ±0.3

ANGULAR
 ±0.5

PART NO.:
 2121-3-PS-WH-G

MATERIAL:
 SEE ABOVE

SPEC.:
 WHITE(9#)

NAME:
 SNAP-IN TYPE
 AC INLET 2P

APPROVED

CHECKED

DRAW BY

JOB NO.:



UNIT:
 mm

SCALE
 1:1

SHEET
 1 OF 1

APPROVED

CHECKED

DRAW BY

JOB NO.:

REV	DATE	DESCRIPTION	WRITE	APPD.
A.0	2008.05.13	RF DRAWING	胡莉萍	