

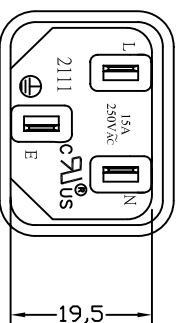
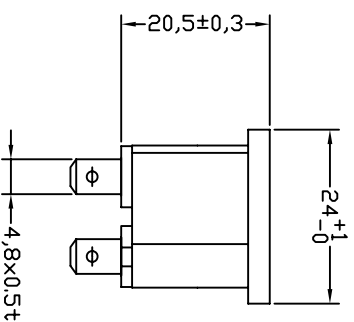
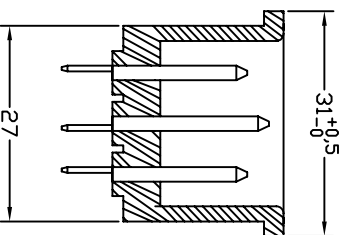
PANEL CUT

- A: MATERIAL:  
 1. HOUSING: NYLON 66 FLAMMABILITY UL 94V-0  
 2. TERMINAL: COPPER ALLOY

- B: CHARACTERISTICS:  
 1. RATING: 10A250V AC EUROPE  
           15A250V AC NORTH AMERICA  
 2. INSULATION RESISTANCE: OVER 100MΩ 500VAC  
 DIELECTRIC STRENGTH: 2000V AC 1 MINUTE

- C: APPROVALS:  
 UL, CSA, VDE, DEMKO, SEMKO, SEV, FIMKO & NEMKO CCC  
 D: ORDERING OPTIONS:

ORDER#	ITEM	REQ.	TERMINAL DIFFERENCES
2111-PW5-G	① + ②		FAST-ON/Q.D. TABS



3	T-07W2B	TERMINAL	2 PCS	Ø4.8xw0.5t	COPPER ALLOY	TIN-PLATED
2	T-07W2A	TERMINAL	1 PCS	Ø4.8xw0.5t	COPPER ALLOY	TIN-PLATED
1		HOUSING	5.0g	SNAP-IN TYPE	PBT-30%GF	HERMOPLASTIC
ITEM	PART NO.	PART NAME	QTY	SPECIFICATION	MATERIAL	REMARKS

**STeady**  
 深圳市仁达电子有限公司  
 SHEN ZHEN STEADY ELECTRONICS CORPORATION

TOLERANCE UNLESS OTHERWISE MARKED  
 DIMENSION:  
 0~6 : ±0.1  
 6~30 : ±0.2  
 30~120: ±0.3

ANGULAR  
 ±0.5

MATERIAL:  
 SEE ABOVE

SPEC.:  
 \_\_\_\_\_

PART NO.:  
 2111-PW5-G  
 NAME:  
 SNAP-IN TYPE  
 AC INLET 3P

APPROVED \_\_\_\_\_ CHECKED \_\_\_\_\_ DRAW BY 谢莉萍 JOB NO.:  
 08/05/05

REV	DATE	DESCRIPTION	WRITE	APPD.
A.0	2008.05.5	RE DRAWING	谢莉萍	



UNIT: mm  
 SCALE 1:1  
 SHEET 1 OF 1