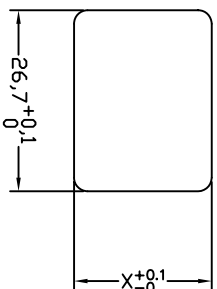
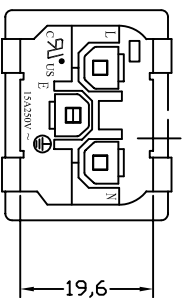
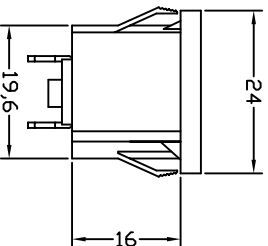
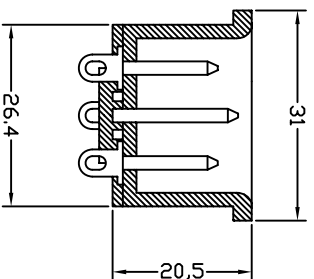


THICKNESS:
0.8~1.2t (X=20.3)
1.3~2.0t (X=20.5)



PANEL CUT



- A: MATERIAL:
1. HOUSING: NYLON 66 FLAMMABILITY UL 94V-2
(UL 94V-0 ON REQUEST)
2. TERMINAL: COPPER ALLOY

- B: CHARACTERISTICS:
1. RATING: 10A250V AC EUROPE
15A250V AC UL/CSA
2. INSULATION RESISTANCE: OVER 100MΩ 500V/AC
DIELECTRIC STRENGTH: 2000V AC 1 MINUTE

C: APPROVALS:
UL, CSA, VDE, DEMKO, SEMKO, SEV, FIMKO & NEMKO CCC, KTL
D: ORDERING OPTIONS:

ORDER#	ITEM REQ.	SPEC
2111-PN-2G	① + ② + ③	Snap in mounting with solder Contact

ITEM	PART NO.	PART NAME	QTY	SPECIFICATION	MATERIAL	REMARKS
4	T-07RN	TERMINAL	3 PCS	Ø4.0mm×0.8t	COPPER ALLOY	TIN-PLATED
3	T-07PB	TERMINAL	2 PCS		COPPER ALLOY	TIN-PLATED
2	T-07PA	TERMINAL	1 PCS		COPPER ALLOY	TIN-PLATED
1	H-11P-2G	HOUSING	5.3g	SNAP-IN TYPE	PA66	THERMOPLASTIC

深圳市仁达电子有限公司
SHEN ZHEN STEADY ELECTRONICS CORPORATION

TOLERANCE UNLESS OTHERWISE MARKED
DIMENSION: ANGULAR ±0.5

0~6 : ±0.1
6~30 : ±0.2
30~120 : ±0.3

PART NO.: 2111-PN-2-G
MATERIAL: SEE ABOVE

NAME: SNAP-IN TYPE
AC INLET 3P
SPEC.: _____

REV	DATE	DESCRIPTION	WRITE	APPD.
A.0	2008.05.4	RE DRAWING	谢莉萍	

APPROVED	CHECKED	DRAW BY	JOB NO.:
		谢莉萍	
		08/05/15	