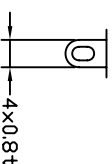
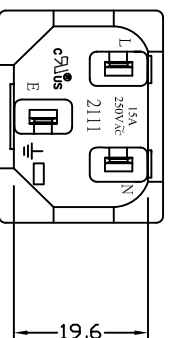
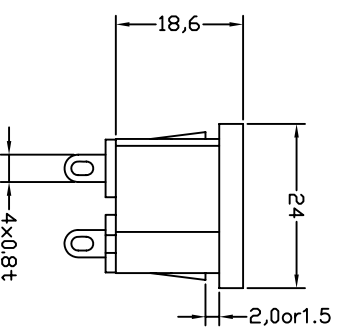
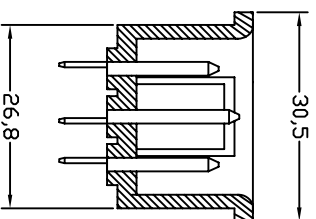


PANEL CUT



- A: MATERIAL:**
- HOUSING: NYLON 66 FLAMMABILITY UL 94V-0
 - TERMINAL: COPPER ALLOY

- B: CHARACTERISTICS:**
- RATING: 10A250V AC EUROPE
15A250V AC NORTH AMERICA
 - INSULATION RESISTANCE: OVER 100MΩ 500VAC
DIELECTRIC STRENGTH: 2000V AC 1 MINUTE

- C: APPROVALS:**
UL, CSA, VDE, DEMKO, SEMKO, SEV, FIMKO & NEMKO CCC
- D: ORDERING OPTIONS:**

ORDER#	ITEM	REQ.	TERMINAL DIFFERENCES
2111-PN2	① + ②	4.0	SOLDER TABS

ITEM	PART NO.	PART NAME	QTY	SPECIFICATION	MATERIAL	REMARKS
3	T-407NB	TERMINAL	2 PCS		COPPER ALLOY	TIN-PLATED
2	T-407NA	TERMINAL	1 PCS		COPPER ALLOY	TIN-PLATED
1		HOUSING	4.6g	SNAP-IN TYPE	PA66	THERMOPLASTIC

深圳市仁达电子有限公司
SHEN ZHEN STEADY ELECTRONICS CORPORATION

TOLERANCE UNLESS OTHERWISE MARKED
DIMENSION: ANGULAR
0~6 : ±0.1
6~30 : ±0.2
30~120 : ±0.3

MATERIAL:
SEE ABOVE

NAME:
SNAP-IN TYPE
AC INLET 3P

SPEC.:

REV	DATE	DESCRIPTION	WRITE	APPD.
A.0	2008.05.29	RE DRAWING	谢莉萍	

UNIT:	SCALE	SHEET	APPROVED	CHECKED	DRAW BY	JOB NO.:
mm	1:1	1 OF 1			谢莉萍	
					08/05/29	