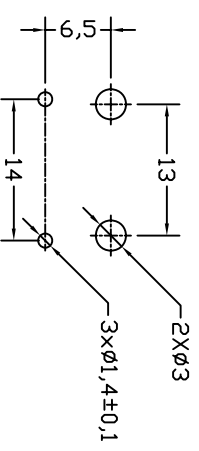
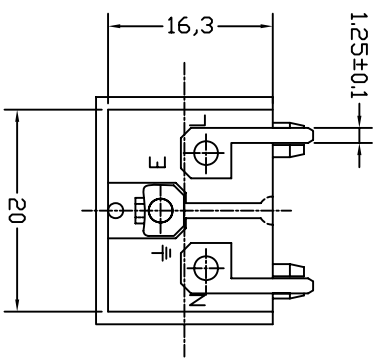
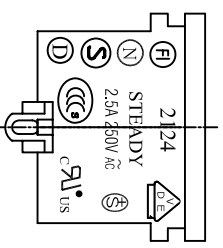
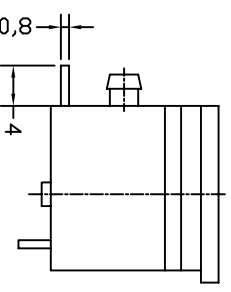
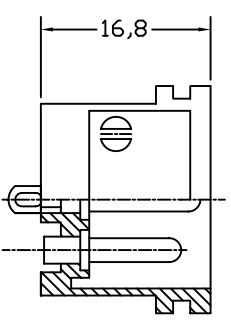


THICKNESS: 1.2~1.6t

PANEL CUT-OUT



- A: MATERIAL:
1. HOUSING: NYLON 66 UL 94V-0
 2. TERMINAL: COPPER ALLOY

- B: CHARACTERISTICS:
1. RATING: 2.5A 250V AC
 2. INSULATION RESISTANCE: OVER 100M Ω 500V DC
 3. DIELECTRIC STRENGTH: 2000V AC ONE MINUTE

C: APPROVALS:
UL, CSA, VDE, SEMKO, SEV, NEMKO, DEMKO, FIMKO, CCC

ITEM	PART NO.	PART NAME	QTY	SPECIFICATION	MATERIAL	REMARKS
5	T-24RS	TERMINAL	1PCS	SOLDER	COPPER ALLOY	TIN-PLATED
4	T-24RB	TERMINAL	2PCS	P, C, B	COPPER ALLOY	TIN-PLATED
3	T-24PB	TERMINAL	2PCS	Ø2.36	COPPER ALLOY	TIN-PLATED
2	T-24PA	TERMINAL	1PCS	Ø3.15	COPPER ALLOY	TIN-PLATED
1	H-24-P-G	HOUSING	3-4g	SNAP-IN TYPE	PA66	THERMOPLASTIC

深圳市仁达电子有限公司
SHEN ZHEN STEADY ELECTRONICS CORPORATION

TOLERANCE UNLESS OTHERWISE MARKED
DIMENSION:
0~6 : ±0.1
6~30 : ±0.2
30~120 : ±0.3

PART NO.: 2124-PSR-G
NAME: AC INLET 3P WITH P.C.B
MATERIAL: SEE ABOVE
SPEC.:
DRAW BY: 侯锡强
JOB NO.:

REV	DATE	RE. DRAWING DESCRIPTION	WRITE	APPD.
A.0	2008.02.22		侯锡强	

UNIT:	SCALE	SHEET
mm	1:1	1 OF 1

APPROVED	CHECKED	DRAW BY	JOB NO.:
		侯锡强	08/02/22