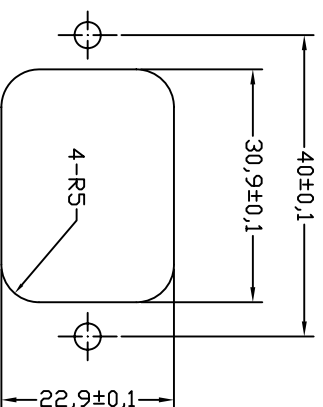
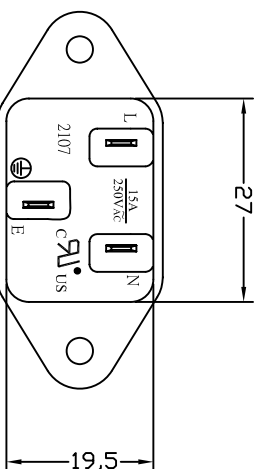
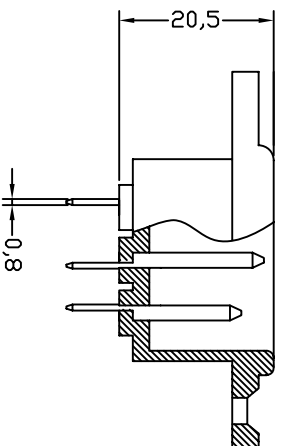


FOR FRONT MOUNTING USE



FOR REAR MOUNTING USE

PANEL CUT-OUT

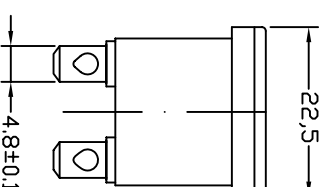


- A: MATERIAL:**
1. HOUSING: PBT WITH 30% GF UL 94V-2
 2. TERMINAL: COPPER ALLOY

- B: CHARACTERISTICS:**
1. RATING: 10A250V AC EUROPE
15A250V AC NORTH AMERICA
 2. INSULATION RESISTANCE: OVER 100MΩ 500V DC
DIELECTRIC STRENGTH: 2000V AC 0.5mA, 1 MINUTE

- C: APPROVALS:**
UL, CSA, VDE, DEMKO, SEMKO, SEV, FIMKO& NEMKO CCC
- D: ORDERING OPTIONS:**

ORDER#	ITEM REQ.	TERMINAL DIFFERENCES
2107-CQ5-G	① + ②	4.8 FAST-ON/Q.D.TABS



3	T-47QB	TERMINAL	2PCS	Ø4.8xØ0.8t	COPPER ALLOY	TIN-PLATED
2	T-47QA	TERMINAL	1PCS	Ø4.8xØ0.8t	COPPER ALLOY	TIN-PLATED
1		HOUSING	7.5g	SNAP-IN TYPE	PBT+30%GF	THERMOPLASTIC
ITEM	PART NO.	PART NAME	QTY	SPECIFICATION	MATERIAL	REMARKS

PRELIMINARY
深圳市仁达电子有限公司
 SHEN ZHEN STEADY ELECTRONICS CORPORATION

TOLERANCE: UNLESS OTHERWISE MARKED
 DIMENSION: ANGULAR ±0.5
 0 ~ 6 : ±0.1
 6 ~ 30 : ±0.2
 30 ~ 120 : ±0.3

PART NO.: 2107-CQ5-G
 NAME: SCREW-MOUNT AC INLET
 MATERIAL: SEE ABOVE
 SPEC.: _____

APPROVED: _____ CHECKED: _____ DRAW BY: 侯锡强
 JOB NO.: _____

REV	DATE	DESCRIPTION	WRITE	APPD.
A.0	2008.02.22	RE DRAWING	侯锡强	

UNIT:	SCALE	SHEET
mm	1:1	1 OF 1

4			
---	--	--	--