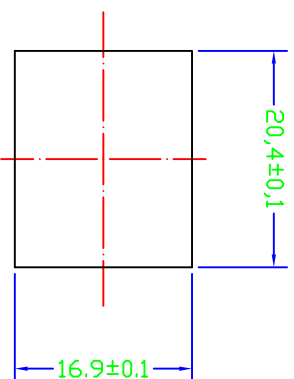
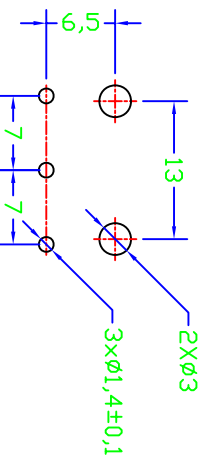
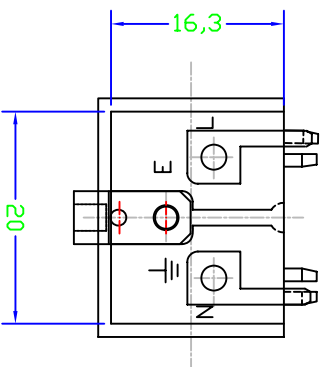
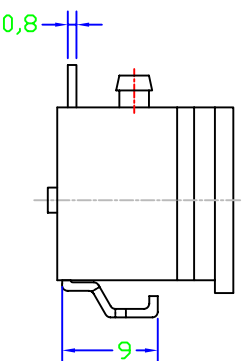
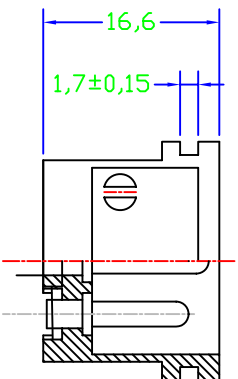


THICKNESS: 1.2~1.6t



PANEL CUT-OUT

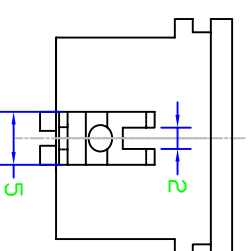
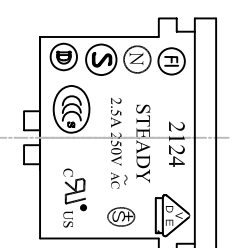


PCB LAYOUT

- A: MATERIAL:
- HOUSING: PBT WITH +30% GLASS FIBER UL 94V-0
 - TERMINAL: COPPER ALLOY

- B: CHARACTERISTICS:
- RATING: 2.5A 250V AC
 - INSULATION RESISTANCE: OVER 100M Ω 500V DC
 - DIELECTRIC STRENGTH: 2000V AC ONE MINUTE

C: APPROVALS:
UL, CSA, VDE, SEMKO, SEV, NEMKO, DEMKO, FIMKO, CCC



ITEM	PART NO.	PART NAME	QTY	SPECIFICATION	MATERIAL	REMARKS
3	T-24SA	TERMINAL	1 pcs		COPPER ALLOY	TIN-PLATED
2	T-24P	TERMINAL	1 SET	P.C.B	COPPER ALLOY	TIN-PLATED
1	H-24P	HOUSING	1	SNAP-IN TYPE	THERMOPLASTIC	

深圳市仁达电子有限公司
SHEN ZHEN STEADY ELECTRONICS CORPORATION

TOLERANCE UNLESS OTHERWISE MARKED
DIMENSION:
0~6: ±0.1
6~18: ±0.3
18~50: ±0.5

PART NO.: 2124-PPS1-G
NAME: AC INLET 3P WITH P.C.B
MATERIAL: SEE ABOVE
SPEC: _____

UNIT:	SCALE	SHEET	APPROVED	CHECKED	DRAWN	NOTE
mm	2:1	1 OF 1			侯锡强 07/11/28	大外框