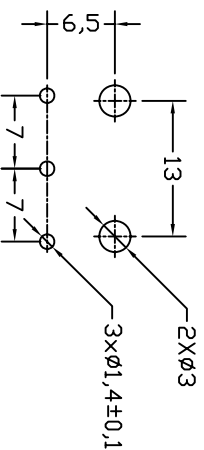
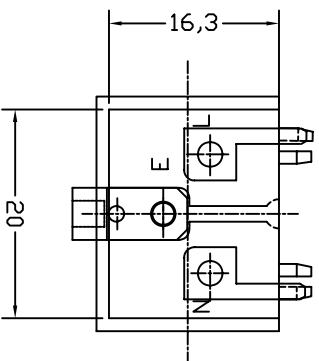
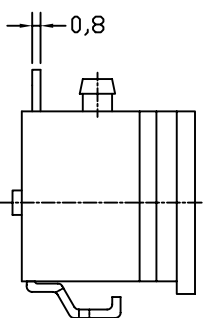
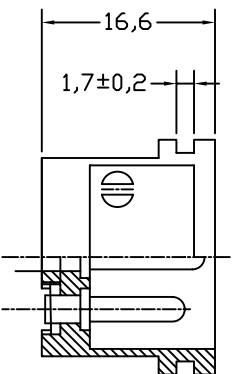


THICKNESS: 1.2~1.6t

PANEL CUT-OUT

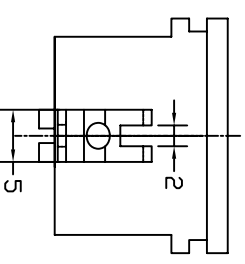
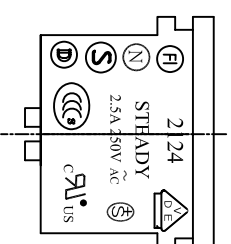


PCB LAYOUT

- A: MATERIAL:
- HOUSING: PBT WITH +30% GLASS FIBER UL 94V-0
  - TERMINAL: COPPER ALLOY

- B: CHARACTERISTICS:
- RATING: 2.5A/250V AC
  - INSULATION RESISTANCE: OVER 100MΩ 500V DC
  - DIELECTRIC STRENGTH: 2000V AC ONE MINUTE

C: APPROVALS:  
UL, CSA, VDE, SEMKO, SEV, NEMKO, DEMKO, FIMKO, CCC



3	T-24SA	TERMINAL	1 pcs		COPPER ALLOY	TIN-PLATED
2	T-24P	TERMINAL	1 SET	P.C.B	COPPER ALLOY	TIN-PLATED
1	H-24P	HOUSING	1	SNAP-IN TYPE	THERMOPLASTIC	
ITEM	PART NO.	PART NAME	QTY	SPECIFICATION	MATERIAL	REMARKS

**深圳市仁达电子有限公司**  
SHEN ZHEN STEADY ELECTRONICS CORPORATION

TOLERANCE UNLESS OTHERWISE MARKED  
DIMENSION:  
0-6 : ±0.1  
6-18 : ±0.3  
18-50 : ±0.5

ANGULAR  
±0.5

PART NO.: **2124-PPS-G**  
NAME: AC INLET 3P WITH P.C.B

MATERIAL: SEE ABOVE

SPEC: —

APPROVED

CHECKED

DRAWN

NOTE

侯锡强  
07.12.15

JOB NO.:

A		UNIT: mm	SCALE: 1:1	SHEET: 1 OF 1
5				