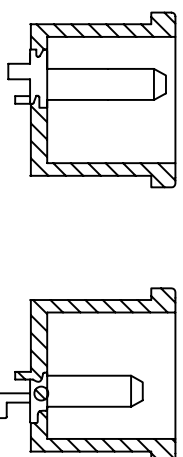


A: MATERIAL:
 1. HOUSING: PBT WITH 30% GF UL 94V-2
 2. TERMINAL: COPPER ALLOY

B: CHARACTERISTICS:
 1. RATING: 10A250V AC EUROPE
 15A250V AC NORTH AMERICA
 2. INSULATION RESISTANCE: OVER 100MΩ 500V DC
 DIELECTRIC STRENGTH: 2000V AC 0.5mA, 1 MINUTE

C: APPROVALS:
 UL, CSA, VDE, DEMKO, SEMKO, SEV, FIMKO & NEMKO
 CCC, KTL
 D: ORDERING OPTIONS:

ORDER#	ITEM REQ.	TERMINAL
2107-CSS-G	① + ②	q. D TABS



ITEM	PART NO.	PART NAME	QTY	SPECIFICATION	MATERIAL	REMARKS
3	T-07LBI-N	TERMINAL	2PCS		COPPER ALLOY	NI-PLATED
2	T-07LA3	TERMINAL	1PCS		COPPER ALLOY	NI-PLATED
1		HOUSING	6.5g	SNAP-IN TYPE	PBT+30%GF	THERMOPLASTIC

深圳市仁达电子有限公司
 SHEN ZHEN STEADY ELECTRONICS CORPORATION

TOLERANCE UNLESS OTHERWISE MARKED

DIMENSION:
 0~6 : ±0.1

6~30 : ±0.2

30~120: ±0.3

MATERIAL:
 SEE ABOVE

PART NO.:
 2107-CSS-G

NAME:
 AC INLET 3P

SPEC:

APPROVED

CHECKED

DRAW BY 侯物强

JOB NO.:

REV	DATE	RE. DRAWING	DESCRIPTION	WRITE	APPD.
A. 0	2008. 02. 22			侯物强	
4					



UNIT:	SCALE	SHEET
mm	1:1	1 OF 1

APPROVED

CHECKED

DRAW BY 侯物强

JOB NO.: