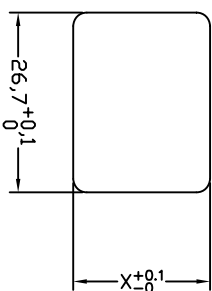
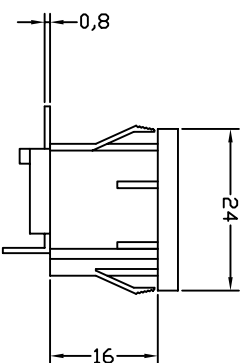
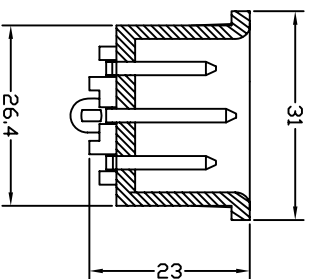


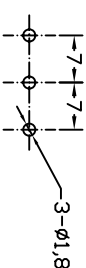
THICKNESS:
0.8~1.2t
(X=20.3)
1.3~2.0t
(X=20.5)



PANEL CUT



P. C. B. LAYOUT



- A: MATERIAL:
1. HOUSING: NYLON 66 FLAMMABILITY UL 94V-2
(UL 94V-0 ON REQUEST)
2. TERMINAL: COPPER ALLOY

- B: CHARACTERISTICS:
1. RATING: 10A250V AC UL/EUROPE
15A250V AC CSA
2. INSULATION RESISTANCE: OVER 100MΩ 500VAC
DIELECTRIC STRENGTH: 2000V AC 1 MINUTE

- C: APPROVALS:
UL, CSA, VDE, DEMKO, SEMKO, SEV, FIMKO & NEMKO CCC,
KTL
D: ORDERING OPTIONS:

ORDER#	ITEM REQ.	TERMINAL DIFFERENCES
2111-2-P71-G	① + ②	PCB MOUNTING FOR PITCH 7.0

5	T-11P7B1	TERMINAL	2PCS	P.C.B MOUNTING	COPPER ALLOY	TIN-PLATED
4	T-11P1A1	TERMINAL	1PCS	P.C.B MOUNTING	COPPER ALLOY	TIN-PLATED
3	T-07PB	TERMINAL	2PCS		COPPER ALLOY	TIN-PLATED
2	T-07PA	TERMINAL	1PCS		COPPER ALLOY	TIN-PLATED
1	H-11-2P-G	HOUSING	1PCS	SNAP-IN TYPE	PA66	THERMOPLASTIC

SHEN ZHEN STEADY ELECTRONICS CORPORATION
深圳市仁达电子有限公司

TOLERANCE UNLESS OTHERWISE MARKED
DIMENSION:
0~6 : ±0.1
6~30 : ±0.2
30~120 : ±0.3

ANGULAR
±0.5

MATERIAL:
SEE ABOVE

NAME:
AC INLET 3P
WITH PCB

SPEC.:

REV	DATE	RE DRAWING DESCRIPTION	WRITE	APPD.
A.0	2008.02.22		侯锡强	

UNIT:	SCALE	SHEET
mm	1:1	1 OF 1

APPROVED	CHECKED	DRAW BY	JOB NO.:
		侯锡强	

08/02/22

