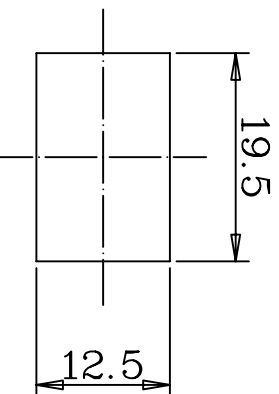


THICKNESS: 1.65t

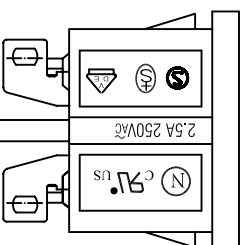
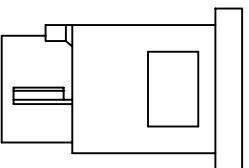


PANEL CUT-OUT

- A: MATERIAL:
1. HOUSING: PBT WITH 30% GLASS FIBER UL 94V-0
 2. TERMINAL: COPPER ALLOY

B: CHARACTERISTICS:

1. RATING: 2.5A250VAC UL, CSA, VDE, SEMKO, SEV & NEMKO, CCC
 2. INSULATION RESISTANCE: OVER 100MΩ AT 500V DC
 3. 2000V AC ONE MINUTE
- C: APPROVALS:
UL, CSA, VDE, SEMKO, SEV & NEMKO, CCC



2	T-20S	TERMINAL	2 pcs	SOLDER TYPE	COPPER ALLOY	TIN-PLATED
1	H-21-3-S	HOUSING	1	SNAP-IN TYPE	PET+30 %GF	UL 94V-0
ITEM	PART NO.	PART NAME	QTY	SPECIFICATION	MATERIAL	REMARKS



深圳市仁达电子有限公司
SHEN ZHEN STEADY ELECTRONICS CORPORATION

TOLERANCE UNLESS OTHERWISE MARKED
DIMENSION: ANGULAR ± 0.5

0 ~ 6 : ± 0.1
6 ~ 30 : ± 0.3
30 ~ 120 : ± 0.5

A		UNIT:	SCALE	SHEET
4		mm	1:1	1 OF 1

PART NO.: 2121-3-SS-G (WH)
NAME: SNAP-IN TYPE AC INLET 2P

MATERIAL: SEE ABOVE
SPEC.: —

APPROVED: _____
CHECKED: _____
DRAW BY: 侯锡强

REV: A

07.12.05
JOB NO: