

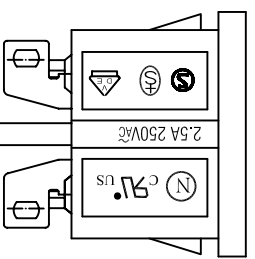
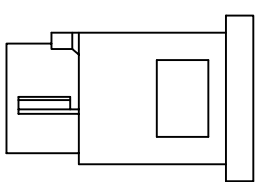
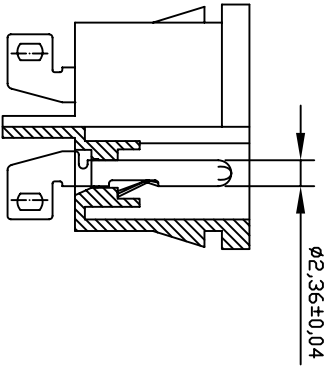
THICKNESS: 1.65t

- A: MATERIAL:
 1. HOUSING: PBT WITH +30% GLASS FIBER UL 94V-0
 2. TERMINAL: COPPER ALLOY

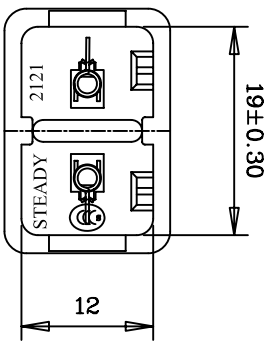
- B: CHARACTERISTICS:
 1. RATING: 2.5A 250V AC UL, CSA, VDE, SEMKO, SEV & NEMKO, CCC
 2. INSULATION RESISTANCE: OVER 100MΩ AT 500V DC
 3. 2000V AC ONE MINUTE

C: APPROVALS:
 UL, CSA, VDE, SEMKO, SEV & NEMKO, CCC

PANEL CUT-OUT



ITEM	PART NO.	PART NAME	QTY	SPECIFICATION	MATERIAL	REMARKS
2	T-20S	TERMINAL	2 pcs	SOLDER TYPE	COPPER ALLOY	TIN-PLATED
1	H-21-3-S	HOUSING	1	SNAP-IN TYPE	PBT+30 %GF	UL 94V-0



深圳市仁达电子有限公司 STEADY ELECTRONICS CORPORATION				PART NO.: 2121-3-SS-G		NAME: SNAP-IN TYPE AC INLET 2P	
TOLERANCE UNLESS OTHERWISE MARKED DIMENSION: ANGULAR ±0.5 0~6 : ±0.1 6~30 : ±0.3 30~120: ±0.5				MATERIAL: SEE ABOVE		SPEC.: —	
APPROVED		CHECKED		DRAW BY 侯锡强 07.12.05		REV.: B	
UNIT: mm		SCALE 1:1		SHEET 1 OF 1		JOB NO.:	