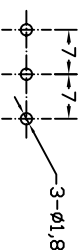
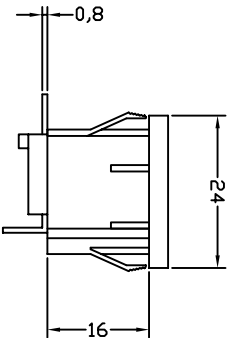
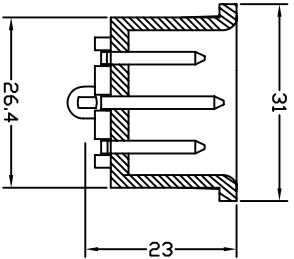


PANEL CUT



P. C. B. LAYOUT

- A: MATERIAL:
1. HOUSING: NYLON 66 FLAMMABILITY UL 94V-2
(UL 94V-0 ON REQUEST)
2. TERMINAL: COPPER ALLOY

- B: CHARACTERISTICS:
1. RATING: 10A250V AC UL/EUROPE
15A250V AC CSA
2. INSULATION RESISTANCE: OVER 100MΩ 500VAC
DIELECTRIC STRENGTH: 2000V AC 1 MINUTE

- C: APPROVALS:
UL, CSA, VDE, DEMKO, SEMKO, SEV, FIMKO & NEMKO
CCC, KTL
D: ORDERING OPTIONS:

| ORDER# | ITEM REQ. | TERMINAL DIFFERENCES |
|---------------|-----------|----------------------------|
| 2111-2-P71-2G | ① + ② | PCB MOUNTING FOR PITCH 7.0 |

| | | | | | | |
|------|------------|-----------|------|-----------------|--------------|---------------|
| 5 | T-11P7B1 | TERMINAL | 2PCS | P.C.B. MOUNTING | COPPER ALLOY | TIN-PLATED |
| 4 | T-11PA1 | TERMINAL | 1PCS | P.C.B. MOUNTING | COPPER ALLOY | TIN-PLATED |
| 3 | T-07PB | TERMINAL | 2PCS | | COPPER ALLOY | TIN-PLATED |
| 2 | T-07PA | TERMINAL | 1PCS | | COPPER ALLOY | TIN-PLATED |
| 1 | H-11-2P1-G | HOUSING | 1PCS | SNAP-IN TYPE | PA66 | THERMOPLASTIC |
| ITEM | PART NO. | PART NAME | QTY | SPECIFICATION | MATERIAL | REMARKS |

SHEN ZHEN STEADY ELECTRONICS CORPORATION
深圳市仁达电子有限公司

PART NO.:
2111-2-P71-2-G

NAME:
AC INLET 3P
WITH PCB

TOLERANCE UNLESS OTHERWISE MARKED
DIMENSION:
0~6 : ±0.1
6~30 : ±0.2
30~120: ±0.3

MATERIAL:
SEE ABOVE

SPEC.:

| REV | DATE | DESCRIPTION | WRITE | APPR. |
|-----|------------|-------------|-------|-------|
| A.1 | 2008.04.09 | 去掉两个点 | 侯锡强 | |
| A.0 | 2008.02.22 | RE DRAWING | 侯锡强 | |

| UNIT: | SCALE | SHEET | APPROVED | CHECKED | DRAW BY | JOB NO.: |
|-------|-------|--------|----------|---------|----------|----------|
| mm | 1:1 | 1 OF 1 | | | 侯锡强 | |
| | | | | | 08/04/09 | |

