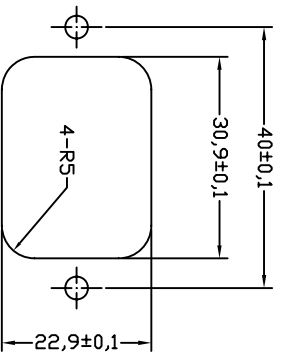
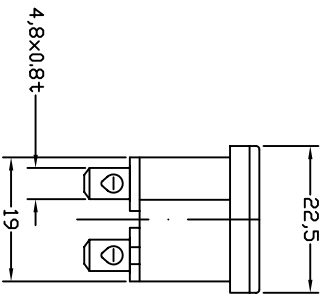
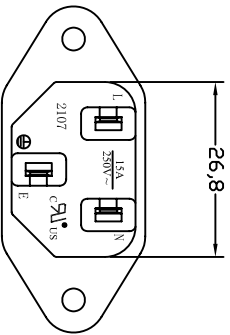
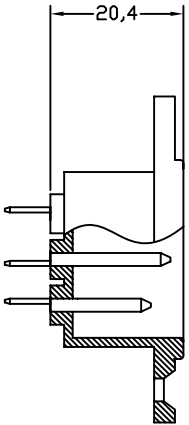


FOR FRONT MOUNTING USE



FOR REAR MOUNTING USE



PANEL CUT-OUT

- A: MATERIAL:**
 1. HOUSING: PBT WITH 30% GF UL 94V-0
 2. TERMINAL: COPPER ALLOY

- B: CHARACTERISTICS:**
 1. RATING: 10A250V AC EUROPE
 15A250V AC NORTH AMERICA
 2. INSULATION RESISTANCE: OVER 100M Ω 500V DC
 DIELECTRIC STRENGTH: 2000V AC 0.5mA, 1 MINUTE

C: APPROVALS:
 UL, CSA, VDE, DEMKO, SEMKO, SEV, FIMKO & NEMKO CCC,
 KTL

D: ORDERING OPTIONS:

ORDER#	ITEM REQ.	TERMINAL DIFFERENCES
2107-CQ1-G	① + ②	4.8 SOLDER Q.D. TABS

3	T-07QB	TERMINAL	2PCS	04.8xwX0.8H	COPPER ALLOY	TIN-PLATED
2	T-07QA	TERMINAL	1PCS	04.8xwX0.8H	COPPER ALLOY	TIN-PLATED
1		HOUSING	7g	SNAP-IN TYPE	PBT-30%GF	THERMOPLASTIC
ITEM	PART NO.	PART NAME	QTY	SPECIFICATION	MATERIAL	REMARKS

深圳市仁达电子有限公司
 SHEN ZHEN STEADY ELECTRONICS CORPORATION

TOLERANCE UNLESS OTHERWISE MARKED
 DIMENSION: 0 ~ 6 : ±0.1
 6 ~ 30 : ±0.2
 30 ~ 120 : ±0.3

MATERIAL:
 SEE ABOVE

SPEC.:
 SCREW-MOUNT
 AC INLET

REV	DATE	RE DRAWING	DESCRIPTION	WRITE	APPLD
A.0	2008.02.21			徐锡强	

UNIT:	SCALE	SHEET
mm	1:1	1 OF 1

APPROVED	CHECKED	DRAW BY	JOB NO.:
		徐锡强	
		08/02/21	