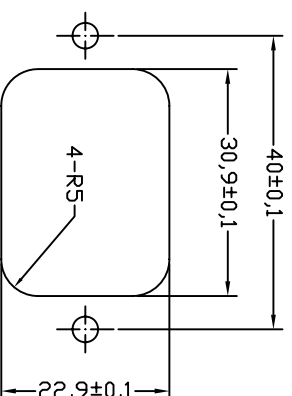
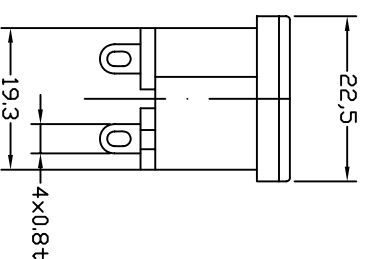
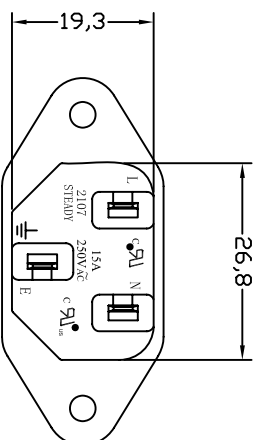
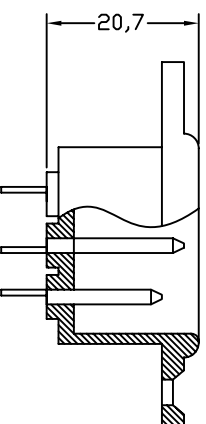


FOR FRONT MOUNTING USE



FOR REAR MOUNTING USE



PANEL CUT-OUT

- A: MATERIAL:
 1. HOUSING: PBT WITH 30% GF UL 94V-0
 2. TERMINAL: COPPER ALLOY

- B: CHARACTERISTICS:
 1. RATING: 10A250V AC EUROPE
 15A250V AC NORTH AMERICA
 2. INSULATION RESISTANCE: OVER 100MΩ 500V DC
 DIELECTRIC STRENGTH: 2000V AC 0.5mA, 1 MINUTE

- C: APPROVALS:
 UL, CSA, VDE, DEMKO, SEMKO, SEV, FIMKO & NEMKO, CCC, KTL
 D: ORDERING OPTIONS:

ORDER#	ITEM REQ.	TERMINAL DIFFERENCES
2107-CN-G	① + ②	4.0 SOLDER TABS

3	T-07NB	TERMINAL	2PCS	Ø4.0max0.8	COPPER ALLOY	TIN-PLATED
2	T-07NA	TERMINAL	1PCS	Ø4.0max0.8	COPPER ALLOY	TIN-PLATED
1		HOUSING	7g	SNAP-IN TYPE	PBT-30%GF	THERMOPLASTIC
ITEM	PART NO.	PART NAME	QTY	SPECIFICATION	MATERIAL	REMARKS

深圳市仁达电子有限公司
 SHEN ZHEN STEADY ELECTRONICS CORPORATION

PART NO.: 2111-CN1-G
 NAME: SCREW-MOUNT AC INLET

TOLERANCE UNLESS OTHERWISE MARKED
 DIMENSION: ANGULAR ±0.5
 0~6 : ±0.1
 6~30 : ±0.2
 30~120 : ±0.3

MATERIAL: SEE ABOVE
 SPEC: APPROVED

30-120 : ±0.3

DRAW BY: 侯锡强
 08/02/21

REV	DATE	DESCRIPTION	WRITE	APPRD.
A.0	2008.02.21	RE DRAWING	侯锡强	

UNIT	SCALE	SHEET	APPROVED	CHECKED	DRAW BY	JOB NO.:
mm	1:1	1 OF 1			侯锡强	