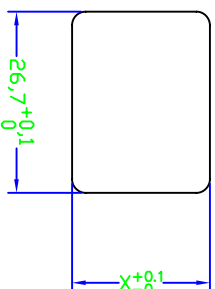


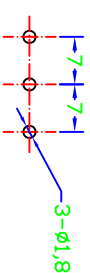
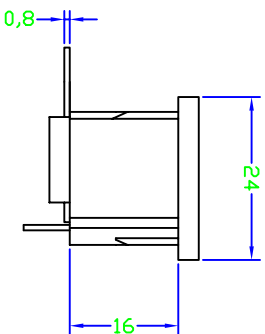
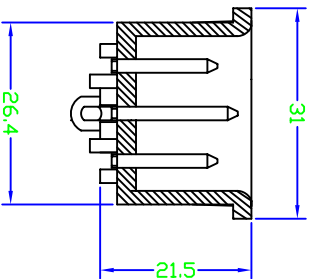
THICKNESS:
 0.8~1.2t (X=20.3)
 1.3~2.0t (X=20.5)



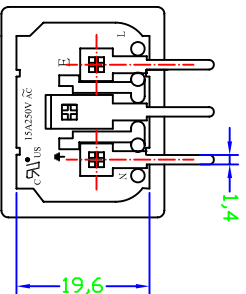
PANEL CUT

- A: MATERIAL:**
 1. HOUSING: NYLON 66 FLAMMABILITY UL 94V-2
 (UL 94V-0 ON REQUEST)
 2. TERMINAL: COPPER ALLOY
- B: CHARACTERISTICS:**
 1. RATING: 10A250V AC UL/EUROPE
 15A250V AC CSA
 2. INSULATION RESISTANCE: OVER 100MΩ 500VAC
 DIELECTRIC STRENGTH: 2000V AC 1 MINUTE
- C: APPROVALS:**
 UL, CSA, VDE, DEMKO, SEMKO, SEV, FIMKO & NEMKO
 CCC, KTL
- D: ORDERING OPTIONS:**

ORDER #	ITEM REQ.	PCB MOUNTING FOR PITCH 7.0
2111-2-P7-G	① + ②	TERMINAL DIFFERENCES



P.C.B. LAYOUT



5	T-11P7B	TERMINAL	2PCS	P.C.B MOUNTING	COPPER ALLOY	TIN-PLATED
4	T-11PA	TERMINAL	1PCS	P.C.B MOUNTING	COPPER ALLOY	TIN-PLATED
3	T-07PB	TERMINAL	2PCS		COPPER ALLOY	TIN-PLATED
2	T-07PA	TERMINAL	1PCS		COPPER ALLOY	TIN-PLATED
1	H-11-2P-G	HOUSING	1PCS	SNAP-IN TYPE	PA66	THERMOPLASTIC
ITEM	PART NO.	PART NAME	QTY	SPECIFICATION	MATERIAL	REMARKS

SHEN ZHEN STEADY ELECTRONICS CORPORATION
 深圳市仁达电子有限公司

PART NO.: 2111-2-P7-G
 NAME: AC INLET 3P WITH PCB

TOLERANCE UNLESS OTHERWISE MARKED
 DIMENSION: ANGULAR ±0.5

MATERIAL: SEE ABOVE

SPEC.:

30-120: ±0.3
 6~30 : ±0.1
 0~6 : ±0.1

APPROVED

CHECKED

DRAW BY

JOB NO.:

REV	DATE	DESCRIPTION	WRITE	APPD.
A.0	2008.02.22	RE DRAWING	侯锡强	

UNIT:	SCALE	SHEET
mm	1:1	1 OF 1

APPROVED	CHECKED	DRAW BY	JOB NO.:
		侯锡强	
		08/02/22	