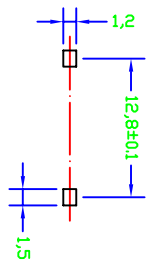
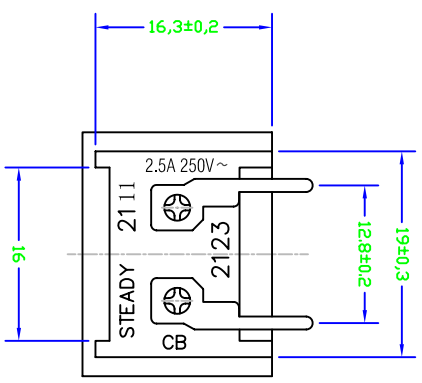
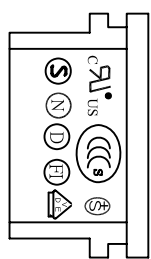
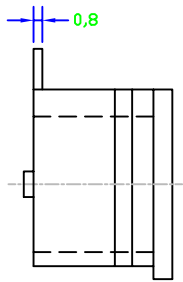
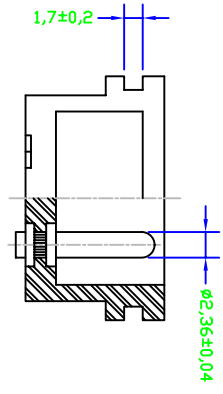


安装孔

ORDER#	ITEM REQ.	TERMINAL
2123-PP-G	1+2+3	PCB MOUNTING

- A: MATERIAL:
 1. HOUSING: PBT WITH +30% GLASS FIBER UL 94V-0
 2. TERMINAL: COPPER ALLOY
- B: CHARACTERISTICS:
 1. RATING: 2.5A 250V AC
 2. INSULATION RESISTANCE: 2000V AC AC 0.5mA AT 1 MINUTE
 3. DIELECTRIC STRENGTH OVER 100MΩ AT 500V DC
 C: APPROVALS:
 UL, CSA, VDE, SEMKO, SEV, NEMKO, DEMKO, FIMKO, CCC
 D: ORDERING OPTION



PCB LAYOUT

ITEM	PART NO.	PART NAME	QTY	SPECIFICATION	MATERIAL	REMARKS
3	T-20-IR1	TERMINAL	1 SET	PCB TYPE	COPPER ALLOY	TIN-PLATED
2	T-20-1P	TERMINAL	1 SET	φ 2.36	COPPER ALLOY	NIKEI-PLATED
1	H-23-P	HOUSING	1	SNAP-IN TYPE	PBT+30 %GF	

深圳市仁达电子有限公司 SHEN ZHEN STEADY ELECTRONICS CORPORATION		PART NO.: 2123-PP-G		NAME: SNAP-IN TYPE AC INLET 2P	
TOLERANCE UNLESS OTHERWISE MARKED DIMENSION: 0 ~ 6 : ±0.1 6 ~ 30 : ±0.3 30 ~ 120 : ±0.5		MATERIAL: SEE ABOVE		SPEC.: —	
APPROVED		CHECKED		DRAWN	
UNIT: mm		SCALE 2:1		SHEET 1 OF 1	
侯锡强 07/11/28		侯锡强 07/11/28		JOB NO.:	