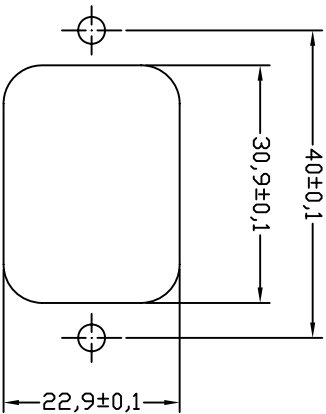
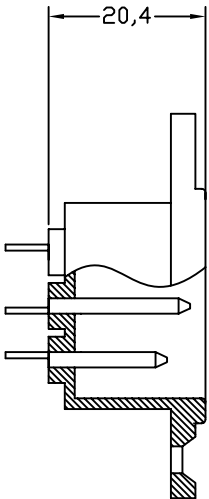


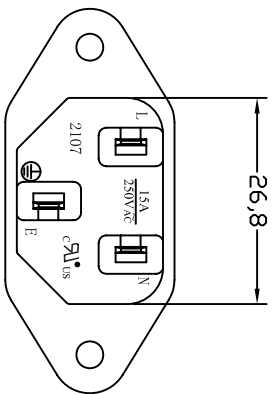
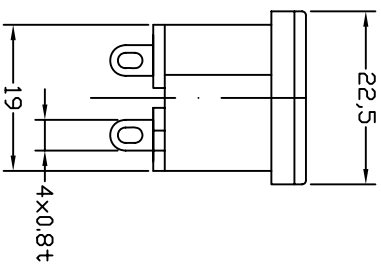
FOR FRONT MOUNTING USE



FOR REAR MOUNTING USE



PANEL CUT-OUT



- A: MATERIAL:**
 1. HOUSING: PBT WITH 30% GF UL 94V-0
 2. TERMINAL: COPPER ALLOY

- B: CHARACTERISTICS:**
 1. RATING: 10A/250V AC EUROPE
 15A/250V AC NORTH AMERICA
 2. INSULATION RESISTANCE: OVER 100M Ω 500V DC
 DIELECTRIC STRENGTH: 2000V AC 0.5mA, 1 MINUTE

- C: APPROVALS:**
 UL, CSA, VDE, DEMKO, SEMKO, SEV, FIMKO& NEMKO, CCC, KTL
D: ORDERING OPTIONS:

| ORDER# | ITEM REQ. | TERMINAL DIFFERENCES |
|------------|-----------|----------------------|
| 2107-CN1-G | ① + ② | 4.0 SOLDER TABS |

| ITEM | PART NO. | PART NAME | QTY | SPECIFICATION | MATERIAL | REMARKS |
|------|----------|-----------|------|---------------|--------------|---------------|
| 3 | T-07NB | TERMINAL | 2PCS | Ø4.0×X0.8t | COPPER ALLOY | TIN-PLATED |
| 2 | T-07NA | TERMINAL | 1PCS | Ø4.0×X0.8t | COPPER ALLOY | TIN-PLATED |
| 1 | | HOUSING | 6.5g | SNAP-IN TYPE | PBT-30%GF | THERMOPLASTIC |

深圳市仁达电子有限公司
 SHEN ZHEN STEADY ELECTRONICS CORPORATION

TOLERANCE UNLESS OTHERWISE MARKED
 DIMENSION: ANGULAR ±0.5

0~6 : ±0.1
 6~30 : ±0.2
 30~120: ±0.3

MATERIAL:
 SEE ABOVE

NAME:
 SCREW-MOUNT
 AC INLET

SPEC.:

| REV | DATE | DESCRIPTION | WRITE | APPL. |
|-----|------------|-------------|-------|-------|
| A.0 | 2008.05.17 | RE DRAWING | 谢莉萍 | |

| UNIT: | SCALE | SHEET | APPROVED | CHECKED | DRAW BY | JOB NO.: |
|-------|-------|--------|----------|---------|---------|----------|
| mm | 1:1 | 1 OF 1 | | | 谢莉萍 | |